



W-6050 S5 (SteelGuarder)

Heavy Duty Safety Wellington Boots



Water Resistant



Upper : Water Resistant PVC Material

Lining : Soft Fabric Mesh

Insoles: Breathable & Shock Absorption Insoles

Outsole : High Quality PVC Material

Toecap : Steel Toecap

Penetration : Steel Midsole Plate

Height : 17cm / 6.8 inch (Size 42# for reference)

Size : EU 37-47#, UK 3-13#, US4-14#

CE EN ISO 20345:2022 S5 SR

Application : Construction, Chemical, Food Industry, Catering, Cleaning, Farm & Garden, Food Storage etc



200 JOULE TOECAP



SLIP-RESISTANT



SHOCK ABSORPTION



ANTI-NAIL MIDSOLE



PETROL AND CHEMICAL RESISTANT



WATER RESISTANT



OIL RESISTANT



Steel Toecap Protection • EN ISO 20345:2022

Stainless Steel Toecap is heavy duty and corrosion resistant. The impact resistance can reach 200 joules from falling or rolling objects. The compression resistance can reach 15kN.



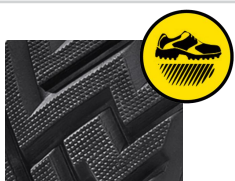
Steel Midsole Plate Protection • EN ISO 20345:2022

Steel midsole plate is flexible and corrosion resistant. The penetration resistance can reach 1100 newtons from nail or other sharp objects. The flex resistance can reach to 1×10^6 flexion cycles without visible cracking.



Breathable & Removable Insoles • EN ISO 20345:2022

Removable EVA Insole provides maximum comfort to your feet and long-stand hours, greatly reduce knee and ankle pressure during walking. The insoles are designed with holes, which is breathable & sweat-absorption.



Slip Resistant Outsole Design • EN ISO 20345:2022

The outsole is made with PVC material, plus 5-10% nitrile. Ultra grip lug design ensures non-slip traction on different workplaces. High density PVC outsole is designed as EN ISO 20345 standard for tear resistant and abrasion resistant.

SAFETOE Standard Package Instruction (Average 42# for Reference)

Boots Weight : 1.8~1.9 KGS /Pair	Carton Weight : 19-20 KGS /Carton
1 Pair / Polybag, 10 Pairs / Carton	Carton Dimension : 50×30×40CM

User Instructions:

- 1.) RECOMMENDED TO USE : Construction, Chemical, Food Industry, Catering, Cleaning, Farm & Garden, Food Storage etc.
- 2.) LIMITATION TO USE: It is very important that footwear selected must be suitable for the right workplaces. The protection against risks or hazards which are not mentioned in this document is not warranted.
- 3.) FITTING & SIZE: All footwear are marked with standard size on package. Some are with different size comparison, such as EU size, UK size, US size etc. Please wear footwear in a suitable size. Footwear which are too loose or too tight may not provide optimum level of protection.
- 4.) STORAGE: Keep the footwear in its original packaging, under ordinary temperature, non-humidity conditions and in clean, covered and ventilated premises.
- 5.) CLEANING: Clean footwear regularly by high quality cleaning treatments recommended as suitable for the purpose. Don't use caustic or corrosive cleaning agents.



Color Available: Black, Blue, Yellow, White etc

