



L-7501 S1P SRC

Breathable Safety Shoes (Metal Free)

Upper : Durable 3D X-Weaving Nylon Fabric
 Lining : Breathable Sandwich Air Mesh
 Insole : Super Memory Foam Insoles
 Outsole : PU/PU Dual Density(Desma Injection)
 Toecap : Composite Toecap
 Penetration : Kevlar Midsole Plate
 Size : EU 37-47#, UK 3-13#, US4-14#
 CE EN ISO 20345:2011 S1P SRC
 Application : Construction, Logistics, Mechanics, Glasses Installation, Factory Workshop, Garage etc



200 JOULE TOECAP



SLIP-RESISTANT



SHOCK ABSORPTION



ANTI-STATIC



ANTI-NAIL MIDSOLE



PETROL AND CHEMICAL RESISTANT



OIL RESISTANT



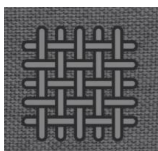
Composite Toe Cap Protection • AN1-EN12568

It is made with light weight fiber-glass material, which can reach 200 joules from falling or rolling objects. It is stronger and more light than steel toecap.



Kevlar Plate Protection • AN1-EN12568

Kevlar midsole plate, is zero-penetration resistant. It can resist 1100 newtons nail puncture from sharp objects. It is stronger and more flexible than steel plate.



3D X-Weaving Fabric • CE EN ISO 20345:2011

Durable 3D weaving nylon fabric with thickness 1.6-1.8mm. It is treated with breathable technology to keep feet from dry during walking all days. Tear strength is required 10% higher than Europe test requirement, to reach longer lifespan.

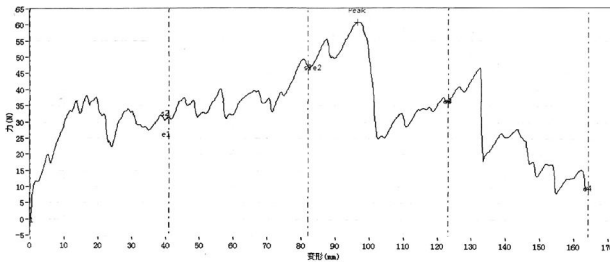


Light Weight PU/PU Outsole • CE EN ISO 20345:2011

The outsole is made with PU/PU dual density material. The midsole is 45±5 degree hardness PU, which is soft and shock absorption. The outsole is 65±5 degree hardness PU, which is tough and abrasion resistant. The outsole can pass SRC slip-resistant test.

Sole Bonding Strength Test

- EN ISO 20344:2011, 5.2 (Between Upper & Sole)
- Average Test Result 5.8 ± 5 (N/mm)



Upper, Lining & Bonding Strength Test Result

Leather Tear Strength \geq	120.0 Newtons
Leather Tensile Properties \geq	15.0 N/mm ²
Lining Tear Strength \geq	15.0 N/mm
Bonding Strength \geq	4.0 N/mm

✓ Protection With Slip Resistant (SRC)	Result
Test Requirement : SRA (Eurotile 2+Nal S) Forward Heel Slip ≥ 0.28 & Forward Flat Slip: ≥ 0.32 SRB (Steel Floor+Glycerine) Forward Heel Slip ≥ 0.13 & Forward Flat Slip: ≥ 0.18	PASS
Standards : EN ISO20344:2011(5.11) , SRC Means both SRA & SRB requirements are fulfilled.	
✓ Protection With Anti-Static	Result
Test Requirement : Anti-static 100K Ω -1000M Ω , Test Voltage: 100 ± 2 V DC , Test Period: 1 Minute	PASS
Standards : EN ISO 20344:2011(5.10) Dry Humidity (30 ± 5) & Wet Humidity (85 ± 5)	
✓ Protection Resistant to Fuel Oil	Result
Test Requirement : Change in Volume and Change in Hardness (Outsole) is No More Than +12%(*)	PASS
Standards : EN ISO 20344:2011(8.6.1)	
SAFETOE Standard Package Instruction (Average 42# for Reference)	
Shoes Weight : 1.1-1.2 KGS /Pair	Carton Weight : 12-13 KGS /Carton
1 Pair / Color Box , Dimensions : 32 \times 21 \times 12CM	10 Pair / Carton , Dimensions : 62 \times 43 \times 33CM



User Instructions:

- 1.) RECOMMENDED TO USE : Construction, Logistics, Mechanics, Glasses Installation, Factory Workshop, Farming, Garden, Garage etc.
- 2.) LIMITATION TO USE: It is very important that footwear selected must be suitable for the right workplaces. The protection against risks or hazards which are not mentioned in this document is not warranted.
- 3.) FITTING & SIZE: All footwear are marked with standard size on tongue label. Some are with different size comparison, such as EU size, UK size, US size etc. Please wear footwear in a suitable size.

- 4.) STORAGE: Keep the footwear in its original packaging, under ordinary temperature, non-humidity conditions and in clean, covered and ventilated premises.
- 5.) CLEANING: Clean footwear regularly by high quality cleaning treatments recommended as suitable for the purpose. Don't use caustic or corrosive cleaning agents.