

Top Quality  
Creative Design  
Amazing Comfort



Keep Worker in Safe!

# L-7222 S3 SR

## Heavy Duty S3 Safety Shoes

Upper : High Quality Embossed Cow Leather

Lining : Abrasion Resistant Nylon Fabric

Insole : Soft Hi-polyu Insoles

Outsole : PU/PU Dual Density

Toecap : Steel Toecap

Penetration : Steel Midsole Plate

Size : EU 37-47#, UK 3-13#, USA-14#

CE EN ISO 20345:2022+A1:2024 S3 SR FO

ASTM E 2149-2020 Approved Anti-microbial Lining & Insole (Odor Resistant)

Application : Construction, Logistics, Mechanics, Glasses Installation, Factory Workshop, Garage etc



200 JOULE  
TOECAP



SLIP-  
RESISTANT



SHOCK  
ABSORPTION



ANTI-STATIC



ANTI-NAIL  
MIDSOLE



PETROL AND  
CHEMICAL  
RESISTANT



WATER  
RESISTANT



OIL  
RESISTANT



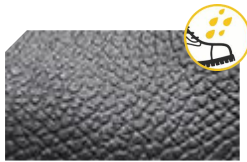
### Steel Toecap Protection • EN ISO 20345:2022

Stainless Steel Toecap is heavy duty and corrosion resistant. The impact resistance can reach 200 joules from falling or rolling objects. The compression resistance can reach 1500kN.



### Steel Midsole Plate Protection • EN ISO 20345:2022

Steel midsole plate is flexible and corrosion resistant. The penetration resistance can reach 1100 newtons from nail or other sharp objects. The flex resistance can reach to 1 X 10<sup>6</sup> flexion cycles without visible cracking.



### Water Resistant Cow Leather Upper • EN ISO 20345:2022

High quality embossed cow leather with thickness 1.6-1.8mm. It is treated with water resistant coating to keep feet dry from raining workday. The tear strength of upper leather can reach to 120 Newtons.



### Heavy Duty PU/PU Outsole • EN ISO 20345:2022

PU/PU double density outsoles are manufactured with Germany Fully Automatic Injection Technology. The midsole is 45±5 degree hardness PU, which is soft and shock absorption. The outsole is 65±5 degree hardness PU, which is tough and abrasion resistant.

## Sole Bonding Strength Test

- EN ISO 20345:2022 (Between Upper & Sole)
- Average Test Result  $5.8 \pm 5$  (N/mm)



### Upper, Lining & Bonding Strength Test Result

|                                   |                        |
|-----------------------------------|------------------------|
| Leather Tear Strength $\geq$      | 120.0 Newtons          |
| Leather Tensile Properties $\geq$ | 15.0 N/mm <sup>2</sup> |
| Lining Tear Strength $\geq$       | 15.0 N/mm              |
| Bonding Strength $\geq$           | 4.0 N/mm               |

| ✓ Protection With Slip Resistant (SR)  | Result   |
|--|--|
| Test Requirement : Forward Heel Slip $\geq 0.31$ (ISO 13287:2019)<br>Backward Heel Slip $\geq 0.36$ (ISO 13287:2019) | PASS   |
| Standards : EN ISO20342:2022(5.3.5) , Test floor: Ceramic tile, Lubricant: Sodium lauryl sulphate                    |  |
| ✓ Protection With Anti-Static  | Result   |
| Test Requirement : Anti-static 100K $\Omega$ -1000M $\Omega$ , Test Voltage: 100 $\pm$ 2 V DC, Test Period: 1 Minute | PASS   |
| Standards : EN ISO 20345:2022 (6.2.2.2) Dry Humidity (30 $\pm$ 5) & Wet Humidity (85 $\pm$ 5)                        |  |
| ✓ Protection Resistant to Fuel Oil   | Result   |
| Test Requirement : Change in Volume and Change in Hardness (Outsole) is No More Than +12%(*)                         | PASS   |
| Standards : EN ISO 20345:2022 (6.4.2)  |  |
| SAFETOE Standard Package Instruction (Average 42# for Reference)   |  |
| Shoes Weight : 1.2-1.3 KGS /Pair   | Carton Weight : 13-14 KGS /Carton                            |
| 1 Pair / Color Box , Dimensions : 32 $\times$ 21 $\times$ 12CM   | 10 Pair / Carton , Dimensions : 62 $\times$ 43 $\times$ 33CM |



### User Instructions:

- 1.) RECOMMENDED TO USE : Construction, Logistics, Mechanics, Glasses Installation, Factory Workshop, Farming, Garden, Garage etc.
- 2.) LIMITATION TO USE: It is very important that footwear selected must be suitable for the right workplaces. The protection against risks or hazards which are not mentioned in this document is not warranted.
- 3.) FITTING & SIZE: All footwear are marked with standard size on tongue label. Some are with different size comparison, such as EU size, UK size, US size etc. Please wear footwear in a suitable size.

Footwear which are too loose or too tight may not provide optimum level of protection.

4.) STORAGE: Keep the footwear in its original packaging, under ordinary temperature, non-humidity conditions and in clean, covered and ventilated premises.

5.) CLEANING: Clean footwear regularly by high quality cleaning treatments recommended as suitable for the purpose. Don't use caustic or corrosive cleaning agents.